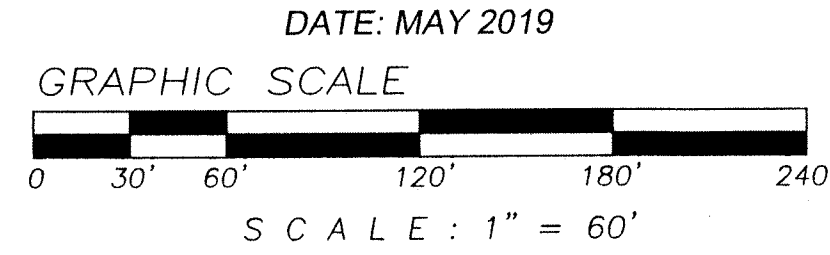


CORPWAY 45 REDEVELOPMENT PLAT

A SUBDIVISION IN SECTION 6, TOWNSHIP 43 SOUTH, RANGE 43 EAST, PALM BEACH COUNTY, FLORIDA,
BEING IN PART A REPLAT OF "SIL-FIR TRACT", PLAT BOOK 39, PAGES 179 AND 180, PUBLIC RECORDS OF PALM BEACH COUNTY, FLORIDA

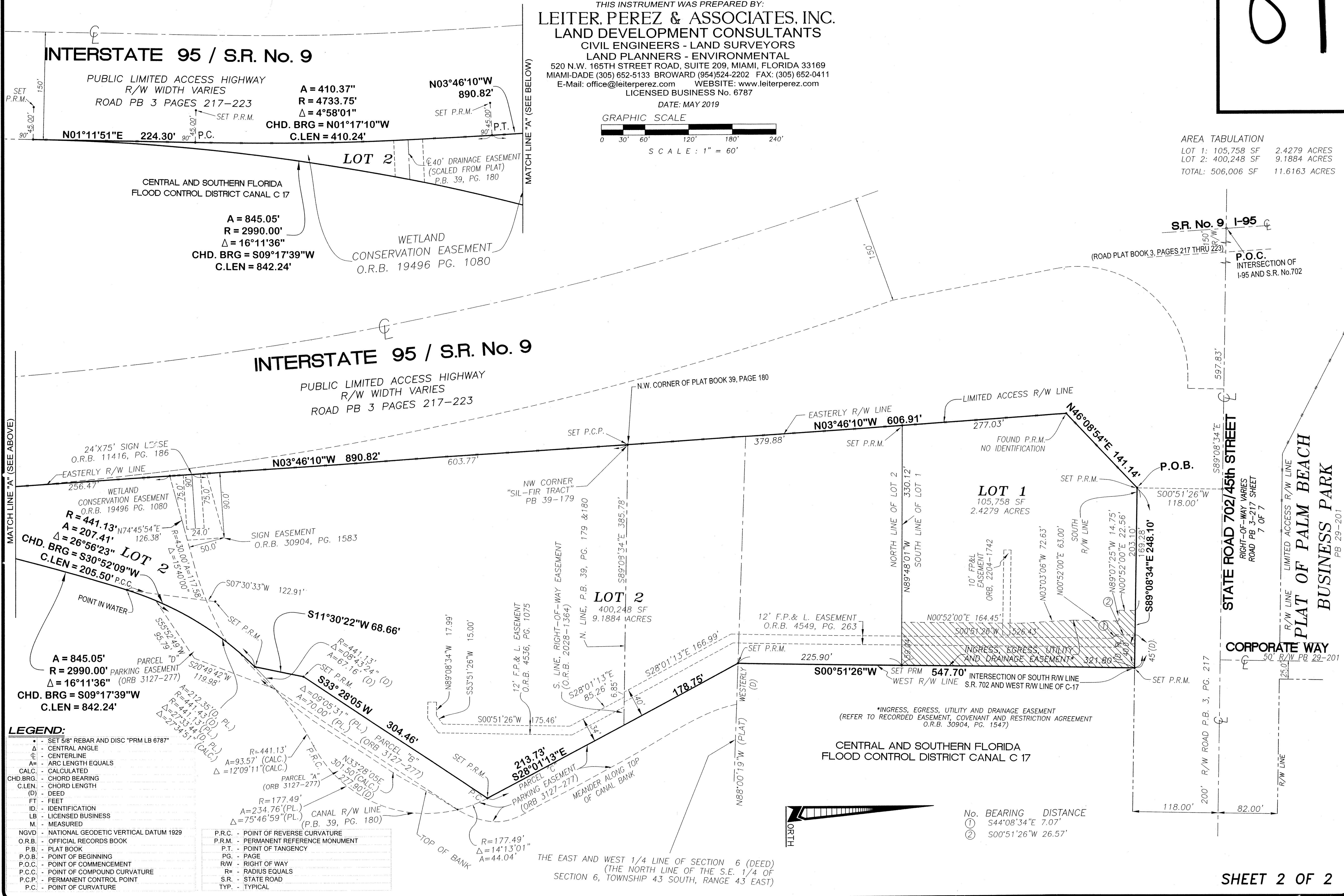
89

THIS INSTRUMENT WAS PREPARED BY:
LEITER, PEREZ & ASSOCIATES, INC.
LAND DEVELOPMENT CONSULTANTS
CIVIL ENGINEERS - LAND SURVEYORS
LAND PLANNERS - ENVIRONMENTAL
520 N.W. 165TH STREET ROAD, SUITE 209, MIAMI, FLORIDA 33169
MIAMI-DADE (305) 652-5133 BROWARD (954)524-2202 FAX: (305) 652-0411
E-Mail: office@leiterperez.com WEBSITE: www.leiterperez.com
LICENSED BUSINESS No. 6787



AREA TABULATION

LOT 1:	105,758 SF	2.4279 ACRES
LOT 2:	400,248 SF	9.1884 ACRES
TOTAL:	506,006 SF	11.6163 ACRES



- LEGEND:**
- SET 5/8" REBAR AND DISC *PRM LB 6787*
 - Δ - CENTRAL ANGLE
 - ⊕ - CENTERLINE
 - A - ARC LENGTH EQUALS
 - CALC. - CALCULATED
 - CHD.BRG. - CHORD BEARING
 - C.LEN. - CHORD LENGTH
 - (D) - DEED
 - FT - FEET
 - ID - IDENTIFICATION
 - LB - LICENSED BUSINESS
 - M - MEASURED
 - NGVD - NATIONAL GEODETIC VERTICAL DATUM 1929
 - O.R.B. - OFFICIAL RECORDS BOOK
 - P.B. - PLAT BOOK
 - P.O.B. - POINT OF BEGINNING
 - P.O.C. - POINT OF COMMENCEMENT
 - P.C.C. - POINT OF COMPOUND CURVATURE
 - P.C.P. - PERMANENT CONTROL POINT
 - P.C. - POINT OF CURVATURE
 - P.R.C. - POINT OF REVERSE CURVATURE
 - P.R.M. - PERMANENT REFERENCE MONUMENT
 - P.T. - POINT OF TANGENCY
 - PG. - PAGE
 - R/W - RIGHT OF WAY
 - R - RADIUS EQUALS
 - S.R. - STATE ROAD
 - TYP. - TYPICAL

No. BEARING DISTANCE

①	S44°08'34"E	7.07'
②	S00°51'26"W	26.57'